

MANDATORY SERVICE BULLETIN Z 242L/63a

Technical content of the document is approved
on the basis of DOA Approval No. EASA.21J.110

- 1. DATE:** May 28, 2014

- 2. APPLICABLE TO:** All Z 242L aircraft's from S/N 0741 incl. to S/N 0799 incl. with adjustable foot control.

- 3. REASON:**

Inaccurate defining of the installed clamp in parking brake attaching clamp in the Maintenance Manual. During maintenance (disassembly and subsequent assembly of the clamp) could be improper adjusting and subsequent colliding clamp and rudder pedals when setting the rudder pedals to the front position.

In the context with this potential collisions would not be possible properly set of rudder deflection during aircraft leveling and rigging.

- 4. ACTIONS REQUIRED:** Revision of Z 242L aircraft accompanying documentation

- 5. ACCOMPLISHMENT:** Immediately after receipt of this bulletin

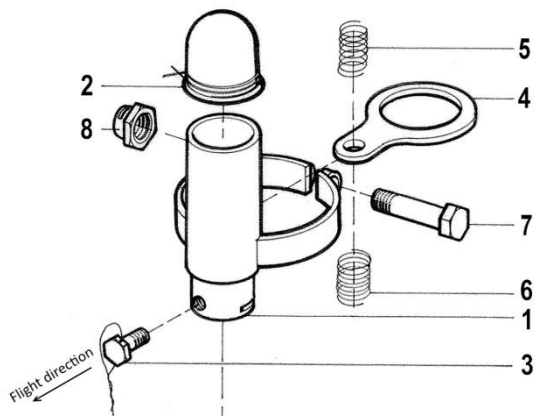
- 6. PERFORMED BY:** Operator/owner

- 7. COSTS COVERED BY:** No will arise

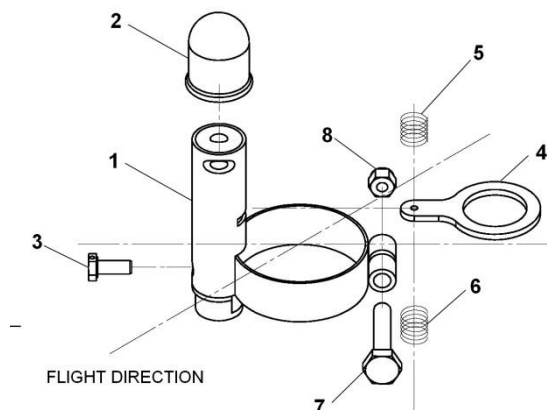
- 8. PROCEDURES:**
 - a) Check the location of the attaching clamp in parking brake on left brake cylinder. In case of collision with the pedals rotate it into required position (see following figure). Verify no conflict in front and rear pedal control position.

- b) Verify the adjustment of the rudder (the deflection) in case of need or doubt.
Note this inspection, into the aircraft board documentation.

Original clamp position:



Possible rotation of the clamp in the required position:



- | | |
|---------------------|------------|
| 1 – attaching clamp | 5 - spring |
| 2 - cap | 6 - spring |
| 3 - screw | 7 - screw |
| 4 – arresting ring | 8 - nut |

- a) In Maintenance Manual of the Z 242L aircraft, Vol. II (Doc. No. 003.031.1) - Czech version:
- remove old pages: 0-3, 0-4, 0-5, 0-8, 2-37, 4-46, 6-123
 - insert new pages of Revision No. 10 with date of issue 28.5.2014 (see Enclosure).
 - note this revision into the List of Revision

- In Maintenance Manual of the Z 242L aircraft, Vol. II (Doc. No. 003.032.1) - English version:
- remove old pages: 0-3, 0-4, 0-5, 0-7, 2-37, 4-46, 6-123
 - insert new pages of Revision No. 9 with date of issue 28.5.2014 (see Enclosure).
 - note this revision into the List of Revision

9 NECESSARY MATERIAL:

New pages of accompanying documentation (see Enclosure)

10 ENCLOSURE:

New pages of Z 242L aircraft Maintenance Manual,
Vol. II (Doc. No. 003.031.1) - Czech version:
0-3, 0-4, 0-5, 0-7, 2-37, 4-46, 4-46A, 4-46B, 6-123

New pages of Z 242L aircraft Maintenance Manual,
Vol. II (Doc. No. 003.032.1) - English version:
0-3, 0-4, 0-5, 0-7, 2-37, 4-46, 4-46A, 4-46B, 6-123



.....
Ing. Dušan Totek
Chief Designer

Contact address: ZLIN AIRCRAFT a.s.
765 02 Otrokovice
Czech republic
www.zlinaircraft.eu