

**INFORMATION BULLETIN Z 126, 226/35b, Z 326/88b, Z526/71b**

1. **DATE:** 29.2.2000
2. **MODELS AFFECTED:** All aircraft Z 226B, Z 226 A, Z 226 AS, Z 226 SL, Z 326, Z 326A, Z 326 M, Z 526, Z 526F, Z 526M, Z 526A, Z526 AS, Z 526 FI, Z 526AFS-V, Z 526L
3. **SUBJECT:** The fire extinguisher used on the mentioned aircraft is no longer manufactured.
4. **CORRECTION:** Replacement with the fire extinguisher T1H-L.
5. **TIME OF COMPLIANCE:** In case of need of replacement of the fire extinguisher or as decided by the operator.
6. **CORRECTION PERFORMED BY:** Manufacturer or authorized organization.
7. **EXPENSES COVERED BY:** Operator
8. **PROCEDURE:**
  - A) **Removal of the original fire extinguisher:**  
 Remove both front side covers of the fuselage. Remove the fire extinguisher intake manifold, the fire extinguisher and fire extinguisher controls.  
Note: Do not remove the fire extinguisher manifold in the engine area.
  - B) **Gluing of rubber strips on the fire extinguisher body**  
 Glue the rubber strips on the fire extinguisher vessel, as shown in the figure 1. Use e.g. Chemopren glue for gluing or other glue suitable for gluing of rubber on non-absorbent surfaces. Clean the glued surfaces with cleaning petrol prior to gluing.
  - C) **Installation of the new fire extinguisher (see the figure 2):**  
 Check that the fire extinguisher is filled for the prescribed pressure on the pressure gauge and that the levers of the starting mechanism are secured with a safety pin. Insert a bowden hose 2 into the fire extinguisher starting mechanism 1 and secure it against disengagement by means of the ring 3.  
 Insert the fire extinguisher into the original suspensions on the firewall and slightly tighten the sockets so that it is possible to adjust height of the fire extinguisher. Use original binding material for tightening the sockets. Mount the intake manifold 5 (including the sealing rings), tighten the nuts and secure them with binding wire. Tighten bolts of the fire extinguisher sockets. Set the bowden hose support 6 on the diagonal pipe on the upper side of the fuselage frame so that the hole axis is oriented in the direction of the hole of the welded tube on the longitudinal tube of the fuselage frame, through which a stranded wire goes to the fire extinguisher. Tighten the bolted joint of the support of the bowden hose.  
 Insert the other end of the bowden hose 2 into the hole in the bowden hose support 6 and secure it against disengagement by means of the ring 3. Attach the new

stranded wire 4 to the draw rod of the fire extinguisher controls in the rear cockpit area by means of the original binding material. REMOVE SAFETY PIN FROM THE DRAW ROD GUIDEWAY (see figure 3). Lubricate the stranded wire 4 by means of lubrication grease (e.g. CIATIM 201 or Aero Shell Greasse 22) and pull it through the bowden hose, placed in the fuselage, through the tube welded on the fuselage frame longitudinal pipe, through the bowden hose 2 and through the hole in the pin of the starting mechanism levers of the fire extinguisher). Pull with pliers with the protruding end of the stranded wire (thus you will take up clearance in the bowden guideway) and tighten the bolt M4. Secure the bolt against loosening by a drop of red nitro-varnish into the thread. Adjust the protruding end of the stranded wire to the length 15 mm depending on fire extinguisher controls in the front or back pilot's cockpit. Attach the bowden hose 2 between the support 6 and the fire extinguisher to the diagonal pipe of the fuselage frame behind the fire bulkhead by means of the tightening tape SKIFFI 188 x 4.8. Secure the draw rod of the controls in the cockpit by means of the wire 0.9 ČSN 15 3924.1 and with a seal (identically with the original workmanship. The wire and seals are not a part of material supply for performance of the bulletin).

**WARNING**

THE SAFETY PIN FROM THE LEVERS OF THE FIRE EXTINGUISHER STARTING MECHANISM. STORE THE SAFETY PIN. THE FIRE EXTINGUISHER MUST BE SECURED WITH THIS PIN IN EACH MANIPULATION.

Perform check of installation and install the rear side covers.

Make entry into the logbook.

**9. NECESSARY MATERIAL:**

Will be supplied by the manufacturer based on the order.

1.	Complete fire extinguisher	T1H-L	1 pc
2.	Complete Bowden hose	990-436-01	1 pc
3.	Ring	5 ČSN 01 2929.04	2 pc
4.	Rope 1.6 MoN 1701	1 = 2.1	1 pc
5.	Intake manifold	990-436-02	1 pc
6.	Bowden hose support	990-436-03	1 pc
7.	Rubber strip	990-436-04	2 pc
8.	Tightening tape	SKIFFI 188x4.8	1 pc

**10. ENCLOSURE:**

Figure No. 1: Gluing of rubber strips on the fire extinguisher vessel.

Figure No. 2: Installation of the fire extinguisher including its controls.

Figure No. 3: Removal of safety pin from the control draw rod of the fire extinguisher.



.....  
**Ing. Lubomír Hubený**

chief designer

**Contact address:** **ZLIN AIRCRAFT a.s.**  
Obchodně-technické služby  
765 81 Otrokovice  
Czech Republic

ENCLOSURE OF INFORMATION BULLETIN Z 126, 226/35b, Z 326/88b, Z 526/71b

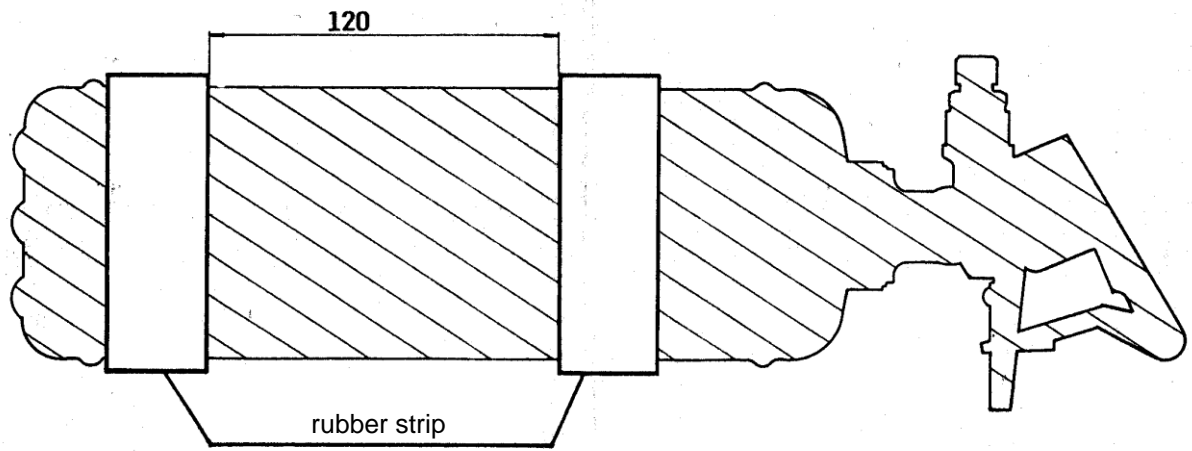


Figure No. 1 Gluing of rubber strips on the fire extinguisher vessel

ENCLOSURE OF INFORMATION BULLETIN Z 126, 226/35b, Z 326/88b, Z 526/71b

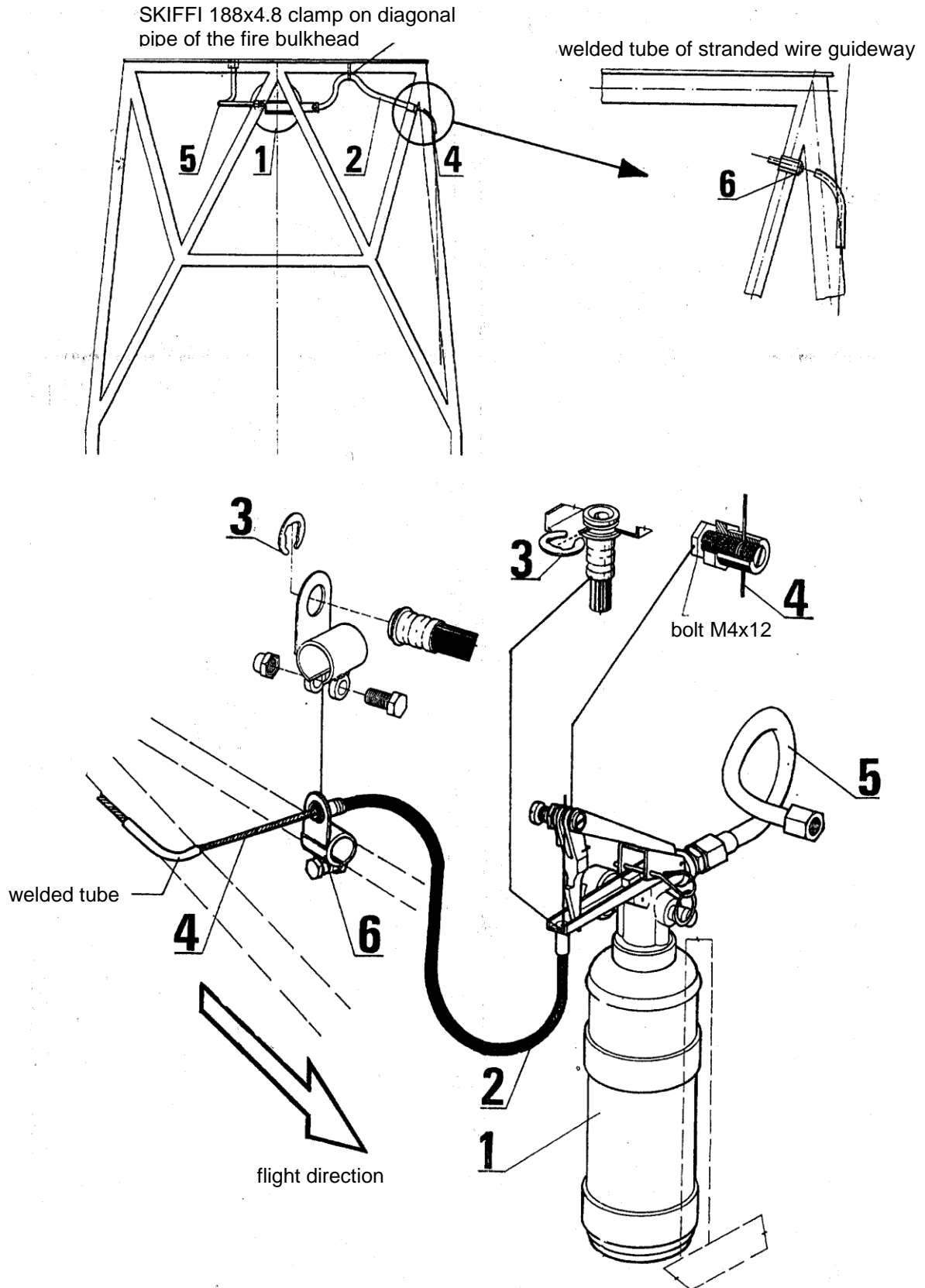


Figure No. 2 Installation of fire extinguisher including its controls.

ENCLOSURE OF INFORMATION BULLETIN Z 126, 226/35b, Z 326/88b, Z 526/71b

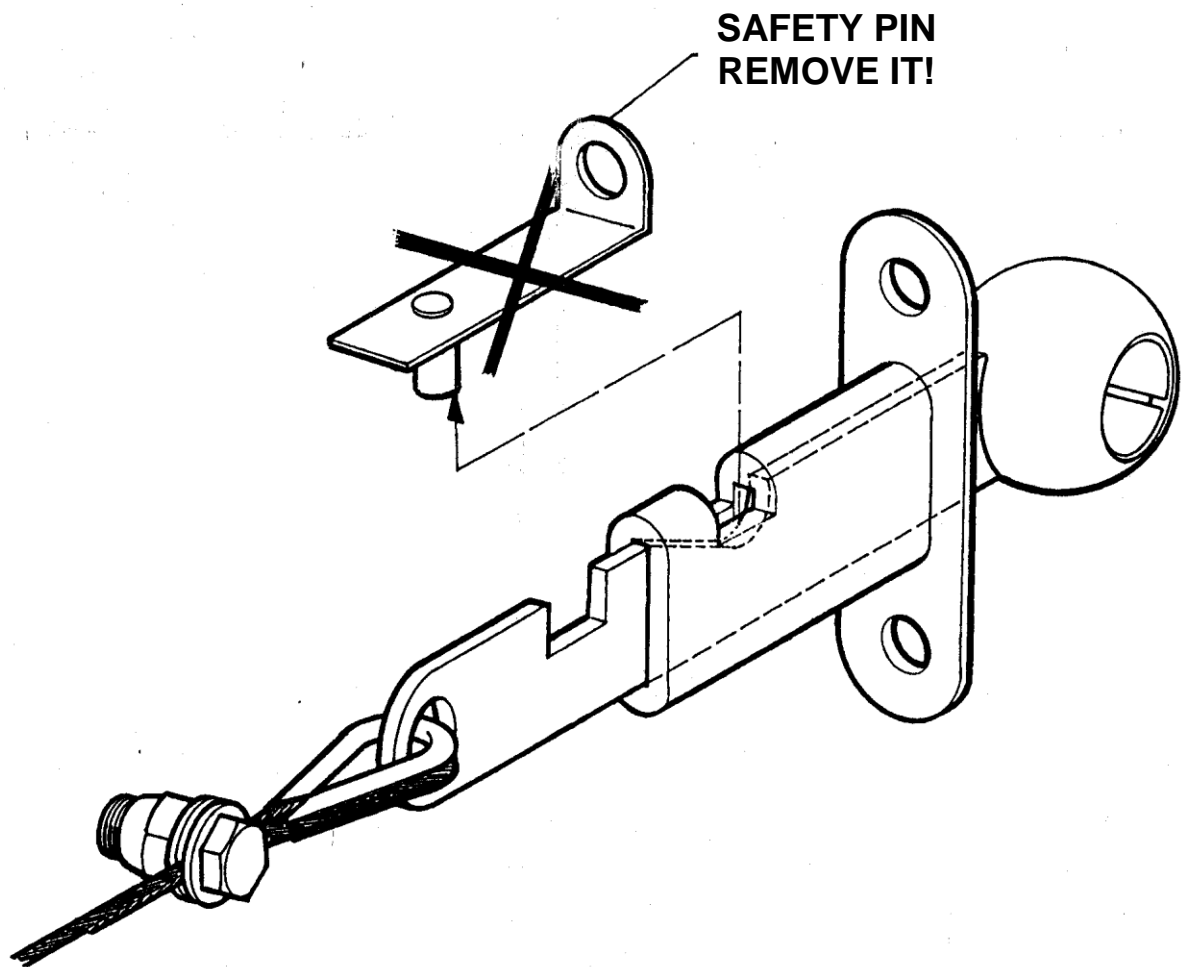


Figure No. 3 Removal of the safety pin from control draw rods of the fire extinguisher