



## SERVICE LETTER No. L 139

**DATE:** June 23, 2022

**TO:** Croatian Air Force

**MODEL AFFECTED:** Z 242 L aircraft, S/N: 0787

**SUBJECT:** Aircraft manufacturer instructions for detected cracks and repair instructions.

Within the aircraft acceptance after 1500 flight hours inspection the operator reported the cracks disclosed on the lower skin of the elevator. *See Figures No. 1 and No. 2 and No. 3.*

The reported findings were considered by the Commission of Airworthiness and Reliability of ZLIN AIRCRAFT a.s. and its conclusion is that the cracks are repairable with no impact on airplane's airworthiness:



*Fig. No. 1*



Fig. No. 2

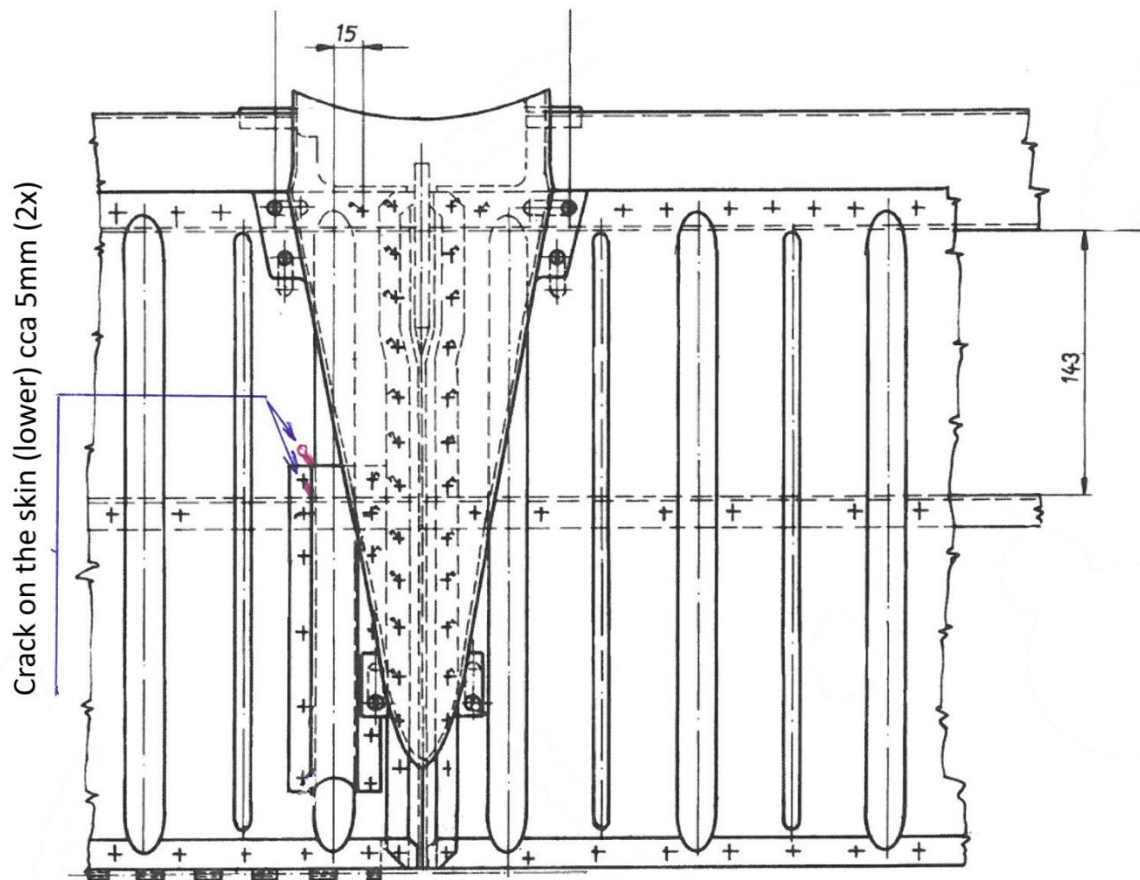


Fig. No. 3



**TIME OF COMPLIANCE:** Upon receiving of this letter perform the repairs as described in accordance with operator's schedule repair plan

**PROCEDURES:** For corrective actions recommended by the manufacturer follow the repair procedures recommended by the FAA document AC-43.13-1B, issued on 8 SEP 98 as follows:

- Remove the existing cover of the trim rod (drawing number L242.3610-08.04A). Drill the hole of 1,5 mm in diameter at the end of each crack in order to stop its propagation. Ream the drilled holes.
- Instead of the removed existing cover install the modified one (drawing number 999-038) which is intended as a repair patch as well. The modified cover is longer by 30 mm compared to the original one. During the installation set the highest point of the cover at the same distance from the trim tab as the original one in order to cover the cracks **and secure free movements of the trim rods.**
- Use the CHERRYMAX CR4523 rivets size 1/8"x 0.260 (approx. 3,2x6 mm) delivered by Zlin Aircraft.
- Note this repair into the Aircraft Log Book.

**CAUTION:**

PERFORM REGULAR VISUAL CHECKS OF REPAIRED SPOTS AT **EVERY 500 FLIGHT HOURS**. RECORD THE RESULTS OF CHECKS IN AIRPLANE TECHNICAL DOCUMENTATION.

**RECOMMENDATION:**

The repair procedure described is approved for other similar repairs performed by the operator's maintenance facility in the future.

**NECESSARY MATERIAL:** Cover sheet Drwg. No. 999-038 1pc  
(order number Y9990380000000000)  
Rivet CHERRYMAX CR 4523 1/8"x 0.260 12 pcs  
(order number 311000000728)  
will be provided by the airplane manufacturer

**ENCLOSURES:** --



Elaborated by:

**Lubomír Januška**

Head of Documentation and Normalization Dept.

Approved by:

**Prof. Ing. Antonín Pištěk, CSc.**

Head of Office of Airworthiness